

Extend the Limits of Your Emulation

EXTRA!® 6530 Client Option terminal emulation software works with EXTRA! X-treme™ to connect Windows users to HP NonStop/Tandem systems. Integrated with Microsoft Office, this productivity-focused emulator allows users to automate routine tasks, eliminate redundant keystrokes, and simplify complex functions—all within a familiar Microsoft interface. What's more, it offers robust security with enhanced support for SSL data encryption. With EXTRA!, you can extend your ability to seamlessly integrate data between host and Windows applications.

With EXTRA! 6530 Client Option version 9.2, you can:

- Modernize your IT with support for the latest critical technologies and operating environments.
- Accelerate user productivity with Macro Launcher, virtual Scratch Pad, document integration, and customizable QuickPads.
- Launch Microsoft Office programs within the EXTRA! framework in order to quickly leverage host information while performing other business tasks.
- Interact with a common interface across a variety of host types.
- Customize fonts, keyboard maps, and toolbars.
- Protect sensitive data in motion with enhanced support for SSL.

What's New in Version 9.2?

- Support for modern operating environments, including Microsoft Windows 7 and Windows Server 2008 R2.
- Integration with Microsoft Office 2010.
- Advanced productivity features, including Macro Launcher and Scratch Pad.
- Enhanced support for SSL.
- Reflection Secure FTP Client for securing data in motion.
- Enhanced 6530 session status line for more efficient data entry.
- Streamlined product evaluation process.

Product Highlights

Advanced productivity.

EXTRA! 6530 Client Option software takes emulation to a new level with its advanced productivity feature set that includes a built-in macro launcher, Scratch Pad, and integration with Microsoft Office applications. Users can create mail messages, notes, tasks, and appointments—or even launch Microsoft Word directly from within their emulation session window. This enables users to quickly leverage host information and use it with their other mission-critical desktop office applications and data.

Bolstered security.

With enhanced support for SSL, EXTRA! 6530 Client Option allows you to safeguard your most sensitive business data. The strong encryption and authentication methods built into EXTRA! help eliminate today's greatest security threats, shielding your files from spies and hackers as they travel across an untrusted TCP/IP network.

Consistent, flexible user experience.

EXTRA! 6530 Client Option offers a consistent and flexible end-user experience. Its common interface across all mission-critical host applications means fewer help desk calls and a reduced burden on IT. And EXTRA! helps end-users to work smarter and more effectively, allowing them to customize fonts, keyboard maps, and toolbars to meet their specific needs.

Support for the modern desktop.

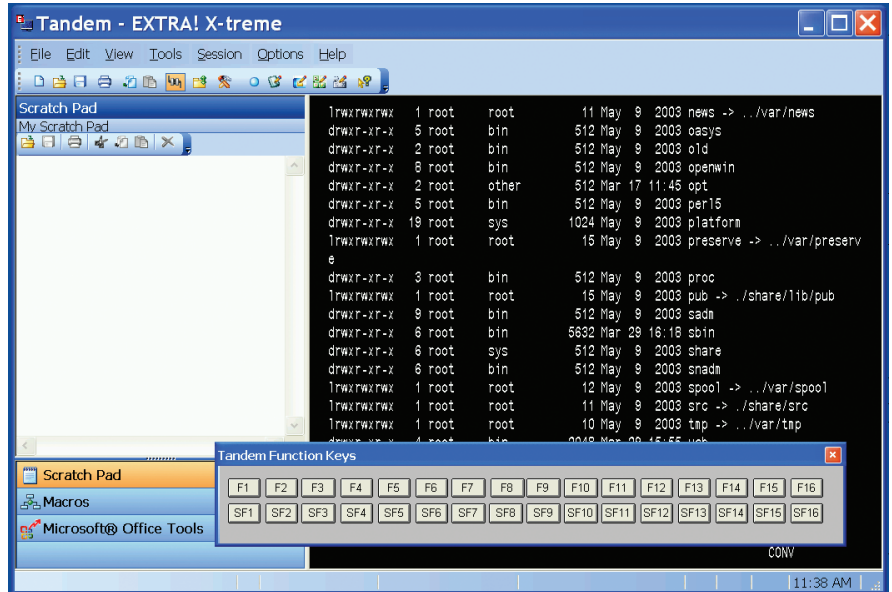
EXTRA! 6530 Client Option supports a mix of existing and emerging IT technologies, including Microsoft Windows 7, Active Directory, and Group Policy; Microsoft App-V, VMware, and Citrix XenApp; and IPv6 and 64-bit computing.

Critical reliability.

HP NonStop/Tandem hosts have long been heralded for their 100 percent uptime, which explains why they house



the mission-critical information and applications that help run a multitude of organizations, including financial institutions, telecommunications businesses, and government agencies. EXTRA! 6530 Client Option offers its own rock-solid reliability for full-featured, mission-critical access.



QuickPads, Macro Launcher, Scratch Pad, Microsoft Office tools, and many other productivity features are conveniently at your fingertips with EXTRA! 6530 Client Option.

TECHNICAL SPECIFICATIONS

Host Types

- HP NonStop/Tandem

Emulation Types

- 6530

Security

- SSL encryption

Productivity

- Macro Launcher
- Scratch Pad
- Integration with Microsoft Office

- QuickPads
- FTP file transfer support
- IXF file transfer support
- Macro record/edit
- Screen print
- Copy/paste
- Keyboard remapper
- Configurable toolbar
- Color mapping
- Configurable font
- Euro currency symbol
- Cursor row/column information displayed on session status line

Operating Systems

- Microsoft Windows 7*
- Microsoft Windows Vista*
- Microsoft Windows XP
- Microsoft Windows Server 2008 R2
- Microsoft Windows Server 2003
- Microsoft Windows Server 2003 Terminal Services
- Microsoft Windows Server 2008 Terminal Services
- Citrix XenApp
- Microsoft App-V
- VMware

* 32- and 64-bit editions



Corporate Headquarters
 1500 Dexter Avenue North
 Seattle, Washington 98109
 TEL 206 217 7500
 800 872 2829
 FAX 206 217 7515

EMEA Headquarters
 The Netherlands
 TEL +31 172 50 55 55
 FAX +31 172 50 55 51

Asia Pacific Headquarters
 Australia
 TEL +61 3 9825 2300
 FAX +61 3 9825 2399

Latin America Headquarters
 Mexico
 TEL +52 55 9178 4970
 FAX +52 55 5540 4886

WEB attachmate.com
 E-MAIL info@attachmate.com

For regional office information, visit www.attachmate.com.