

## See It. Record It. Analyze It.

Attachmate® Luminet® enterprise fraud management software sees, records, and analyzes user activity across all applications. It gives you a complete and accurate picture of who did what, and when—providing the intelligence you need to take informed action.

### Luminet can help you:

- **Stop fraud and misuse**  
Your trusted employees commit more privacy violations than anyone else. Sometimes it's intentional; sometimes it's not. With Luminet, you can quickly tell the difference.
- **Get compliant**  
With Luminet, you can meet key requirements of regulations such as PCI DSS, Sarbanes-Oxley Act, Gramm-Leach-Bliley, HIPAA, FISMA, and Basel II—without changing a single line of code.
- **Pass the audit**  
No more slogging through cryptic, incomplete log files. Luminet records user activity in real time—screen by screen, keystroke by keystroke—creating an accurate audit trail directly from the network.

### Key Features

- Real-time, cross-channel monitoring
- Visual screen-by-screen replay of user activity
- Historical data analysis of captured activity
- On-demand report generation and scheduled reporting
- Google-like data searches across multiple channels
- Risk scoring based on aggregated user activity
- Graphical link analysis tool that detects patterns and pinpoints anomalies
- Investigation Center with case management tools and a Fraud Dashboard view
- Exporting of data and reports in multiple formats (including PDFs with digital signatures)
- Agentless architecture designed for the enterprise
- FIPS 140-2 validated cryptographic module option

## Product Highlights

### See user activity—and stop the guessing games.

Luminet captures a real-time, over-the-shoulder view of user activity on all applications. What's more, it lets you define adaptable business rules that pinpoint suspicious behavior based on your risk management strategy. It also generates real-time alerts related to questionable activity patterns, so you can immediately zero in on anomalies and support key audit questions.

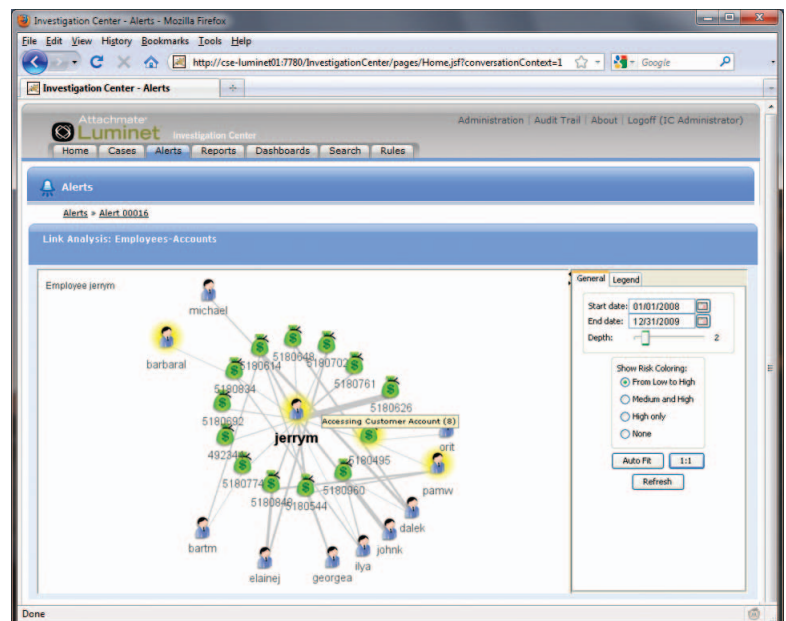
### Record user activity—and play it back on demand.

Luminet records user activity in real time, then uses a proprietary algorithm to compress the data before storing it in a secure repository. You can conduct powerful full-text searches through current or recorded activity, playing back every screen and keystroke relevant to an alert or a case. You can even use built-in graphical dashboards and custom reports to provide at-a-glance intelligence on key activity metrics.

### Analyze user activity—and take informed action.

Luminet helps you clearly distinguish between legitimate and illegitimate activity. For starters, it lets you define robust rules and alerts that respond to suspicious activity in real time. What's more, its interactive tools detect the cross-channel patterns and trends of users across diverse

departments and applications. Armed with this intelligence, you can connect the dots between activities and relationships—and then take informed action.



The Luminet link analysis tool reveals user activity patterns, trends, and complex relationships across diverse enterprise applications.

## TECHNICAL SPECIFICATIONS

### Monitored Applications

- IBM mainframe: 3270, MQ, LU0, and LU6.2
- IBM AS/400: 5250 and MPTN
- Unisys mainframe: T27
- Fujitsu mainframe: 6680
- Web: HTTP/HTTPS
- Client/Server: TCP/IP, MQ Series, MSMQ, and SMB
- UNIX: VT
- SWIFT, FIX, and ISO8583 (ATM)
- Database: Microsoft SQL Server
- FTP
- Other application-to-application protocols can be configured

### Security Protocols

- SSL/TLS
- SSH
- AES encryption and digital certificates

### Database Support

- Microsoft SQL Server 2005 and later
- Oracle 9 and later
- MySQL 4 and later
- Any standard SQL database

### Directory Server Support

- Microsoft Active Directory
- Any LDAP-compliant directory server

### Operating System Support

- Windows Server 2003
- Windows Server 2008
- SUSE Linux
- Red Hat Linux

### About Attachmate

Attachmate delivers advanced software for terminal emulation, legacy modernization, managed file transfer, and enterprise fraud management. With our technologies, more than 65,000 businesses worldwide are putting their IT assets to work in new and meaningful ways. [www.attachmate.com](http://www.attachmate.com)



**Corporate Headquarters**  
1500 Dexter Avenue North  
Seattle, Washington 98109  
TEL 206 217 7500  
800 872 2829  
FAX 206 217 7515

**EMEA Headquarters**  
The Netherlands  
TEL +31 172 50 55 55  
FAX +31 172 50 55 51

**Asia Pacific Headquarters**  
Australia  
TEL +61 3 9825 2300  
FAX +61 3 9825 2399

**Latin America Headquarters**  
Mexico  
TEL +52 55 9178 4970  
FAX +52 55 5540 4886

WEB [attachmate.com](http://attachmate.com)  
E-MAIL [info@attachmate.com](mailto:info@attachmate.com)

For regional office information, visit [www.attachmate.com](http://www.attachmate.com).