



## Premier Modernization Solution for CICS and IMS Environments

Ever since its introduction in 1964, the IBM mainframe has led the market in performance and scalability. This platform continues to serve as a critical data and application repository for virtually all Global 2000 corporations. The most well-established mainframe application environments are CICS® and IMS, which can play an important role in your integration strategy.

Attachmate® Verastream® Transaction Integrator offers direct transaction access to programs in the CICS and IMS environments. Developers can access data and logic from CICS and IMS programs to create services and components (e.g., COM, .NET, Java, or web services) that can be used in web, portal, CRM, mobile, call-center, and web self-service solutions.

### Key Features

- Standard, open interfaces to all the programs developed in the CICS and IMS environments.
- Direct access to the transactions in CICS and IMS applications.
- An import utility that lets you leverage existing metadata definitions and create XML-based metadata.
- Native security support, including RACF, ACF2, and TopSecret.
- Ability to save transactions in the format that is native to your client application, Microsoft® BizTalk Server, or any J2EE-compliant application server.

## Product Highlights

### A Non-Invasive Approach to Integration

The versatile Verastream client/server implementation includes a graphical design environment and web-based centralized management. Verastream Transaction Integrator requires no changes to valuable legacy code or associated business processes.

### Integrating CICS

Customer Information Control System from IBM is perhaps the most widely used family of solutions for online transaction management and connectivity. With Verastream Transaction Integrator, you can harvest and transform DPL-compliant CICS transactions directly, without going through any presentation logic.

Verastream Transaction Integrator accepts input data and delivers output data via market standards such as .NET or Java objects. This data can then be used

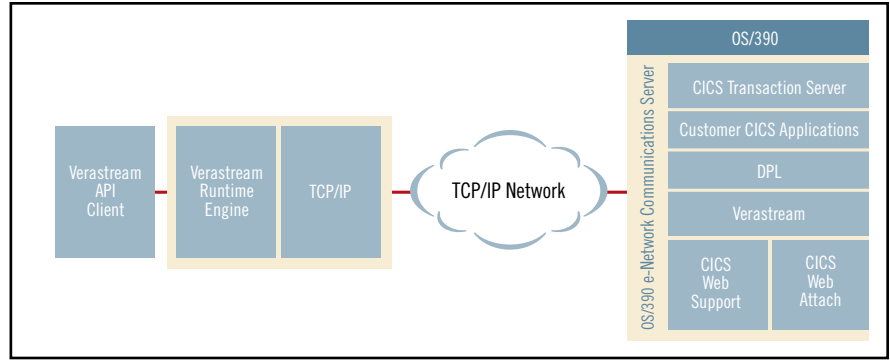
in new applications. You can also use Verastream Transaction Integrator to transfer data from one enterprise system to another when one or both systems are in a CICS environment.

Verastream Transaction Integrator directly accesses the host transaction business logic through the COMMAREA via Distributed Program Link (DPL).

### Integrating IMS

Information Management System is the premier IBM transactional and hierarchical database management system. With Verastream Transaction Integrator, you can encapsulate data and logic from IMS applications as reusable services. Verastream integrates IMS transactions directly through Open Transaction Manager Access (OTMA) via IMS Connect (an optionally installable component of IMS).

Unlike CICS transactions, IMS transactions are typically independent of any presentation logic, because the logic is written as a separate macro routine executed by the Message Formatting Service (MFS) subsystem of IMS. The IMS programs are bound to these formatting routines during an IMS system generation. Because the OTMA facility is above the MFS component, no presentation logic gets included.



This diagram shows the architecture of Verastream Transaction Integrator when used to integrate CICS transactions.

**Verastream Technology**

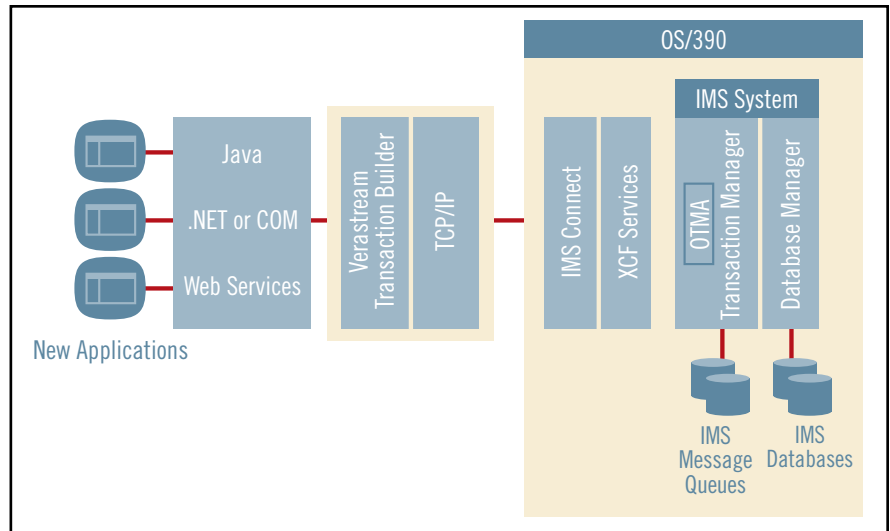
Verastream Transaction Integrator includes the following modules:

**Transaction designer**

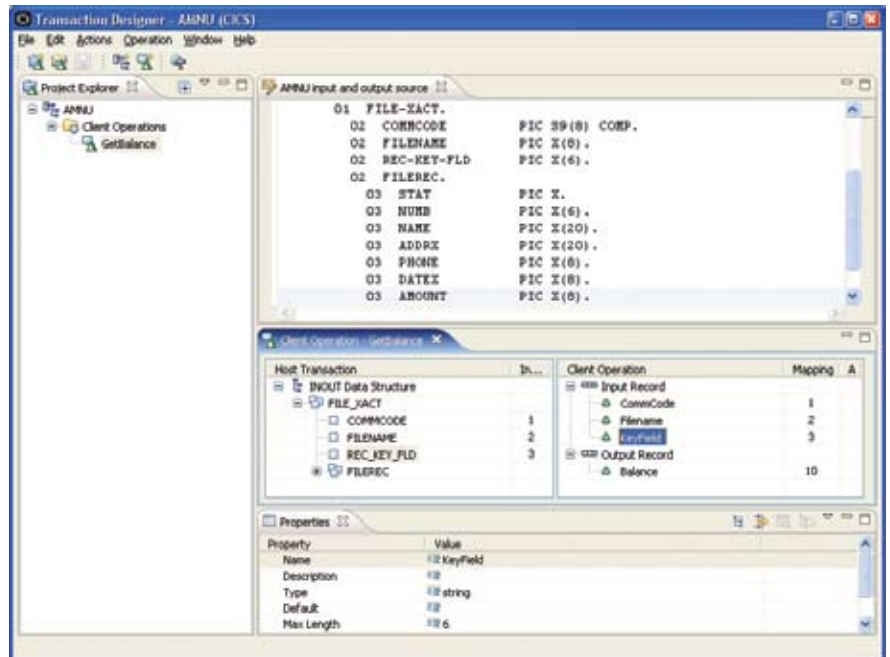
To simplify mid-tier use of host transactions, descriptive names (or aliases) can be assigned that are unique to the service. The transaction designer is breakthrough technology in terms of its ability to import and parse copybook structures in the user interface. A simple drag-and-drop method makes the building of services quick and straightforward, without the need for in-depth mainframe skills. And unlike other integration products, Verastream Transaction Integrator can deal with every style construct in a CICS or IMS application. In fact, Verastream is the only solution to facilitate workflow in the design process using this specific method.

**Runtime engine**

Once the task interface object is integrated into the application, end users have access to CICS or IMS transactions. The Verastream Transaction Integrator runtime engine allows multiple users to have simultaneous access to transactions. It works in conjunction with an application server or another calling application to provide integration points for new applications. Developers can integrate Verastream Transaction Integrator tasks from application servers in .NET or Java frameworks.



This diagram shows the architecture of Verastream Transaction Integrator when used to integrate IMS transactions.



This screen shows the workflow made possible in the design process by the Verastream transaction designer.

### The Verastream Advantage

With the direct integration made possible by Verastream Transaction Integrator, you benefit from the inherent reliability of CICS and IMS transactions. Here are some specific Verastream Transaction Integrator advantages:

- **Performance**  
By harvesting transactions directly, without going through any presentation logic or terminal I/O, Verastream Transaction Integrator offers a high-performance approach. Depending on your platform and bandwidth, you can support 300 to 400 transactions per second.
- **Ease of use**  
The Verastream transaction designer captures COBOL copybooks with drag-and-drop ease so there is no hand coding. Because developers can isolate the tasks that are needed (including “redefine” and “occur” statements), they maintain granular control.
- **Throughput**  
DPL-based interactions between the application and the host deliver

better throughput, while support for TCP/IP in CICS Transaction Server v1.3 or later delivers better results.

- **Open standards**  
You can capture transactions as standard interfaces for reuse in today’s applications. Verastream open standards include J2EE, Microsoft, and web-service interfaces.
- **Security**  
Verastream Transaction Integrator supports IBM RACF Top Secret, ACF2, and Microsoft IIS Secure Sockets Layer, to safeguard data and transactions.
- **Extensibility**  
A DPL-enabled, host-based Java component communicates directly with IBM environments over TCP/IP or SNA to work with your existing infrastructure.
- **Scalability**  
The runtime engine’s support for failover and load balancing allows for scaling across multiple servers.

This set of advantages is unique to Verastream Transaction Integrator, today’s premier solution for quick, risk-free modernization of your CICS and IMS systems.

### The Verastream Product Line

Verastream Transaction Integrator is part of the Attachmate Verastream family, a complete range of integration solutions that extend all types of mainframe and enterprise host functionality. Through its use of industry standards such as web services, J2EE, and .NET, Verastream automatically generates services that can be mixed, matched, and reused. No code changes to existing applications are required, so you can avoid risk while speeding up application integration, application development, and workflow enhancement. Just choose the result you want—basic rejuvenation, customized presentation, or sophisticated high-performance integration—and Verastream can help modernize your legacy assets.

## TECHNICAL SPECIFICATIONS

### Applications Optimized by the Family of Verastream Solutions

- CICS
- IMS/TM
- CICS 3270 Bridge
- 3270 & 5250
- VT420
- HP700/92 & HP2392A
- Web / HTML
- Desktop (Windows, Java, DOS, web-based)

### Server Requirements: Verastream Transaction Integrator

- IBM Transaction Server v2.2, 3.x, or higher

## About Attachmate

Attachmate delivers advanced software for terminal emulation, application integration, and secure communications. Our NetIQ business provides solutions for automating IT processes and managing the performance, security, and compliance of your distributed IT. With our technologies, more than 65,000 businesses worldwide are putting their IT assets to work in new and meaningful ways.



**Corporate Headquarters**  
1500 Dexter Avenue North  
Seattle, Washington 98109  
TEL 206 217 7500  
800 872 2829  
FAX 206 217 7515

**EMEA Headquarters**  
The Netherlands  
TEL +31 172 50 55 55  
FAX +31 172 50 55 51

**Asia Pacific Headquarters**  
Australia  
TEL +61 3 9825 2300  
FAX +61 3 9825 2399

**Latin America Headquarters**  
Mexico  
TEL +52 55 9178 4970  
FAX +52 55 5540 4886

WEB [attachmate.com](http://attachmate.com)  
E-MAIL [info@attachmate.com](mailto:info@attachmate.com)

For regional office information, visit [www.attachmate.com](http://www.attachmate.com).

Provided for informational use only; may be modified at any time without notice.

Copyright © 2009 Attachmate Corporation. All Rights Reserved. Attachmate, the Attachmate symbol, and Verastream are registered trademarks of Attachmate Corporation in the USA. All other trademarks, trade names, or company names referenced herein are used for identification only and are the property of their respective owners. 09-0027.0909