

Attachmate WinINSTALL Desktop Management Suite

The essentials of everyday PC Management

The Attachmate® WinINSTALL® Desktop Management Suite provides the essential desktop and notebook management capabilities that IT organizations of every size require to maintain a productive and healthy computing environment across multiple departments and geographies.

By integrating the most commonly used, everyday desktop management functions, the WinINSTALL Desktop Management Suite immediately increases IT staff efficiency by eliminating the need to purchase, train, and support multiple tools, while reducing expensive visits to the desktop.

Award-winning MSI Packaging

WinINSTALL was the first solution to combine packaging and distribution under

a single management console. While it may seem obvious to tightly integrate the application packaging process with the same solution used for inventory, software distribution, and patch deployment, very few solutions actually do.

Fortunately, WinINSTALL Desktop Management Suite promotes a packaging process that takes into account the current applications and versions installed on the PC—and how the application will eventually be deployed. This optimizes software deployment, and eliminates potential conflicts or errors beforehand. A wizard-based interface guides you through application packaging, existing MSI repackaging, and transform creation—ensuring quick, reliable rollouts.

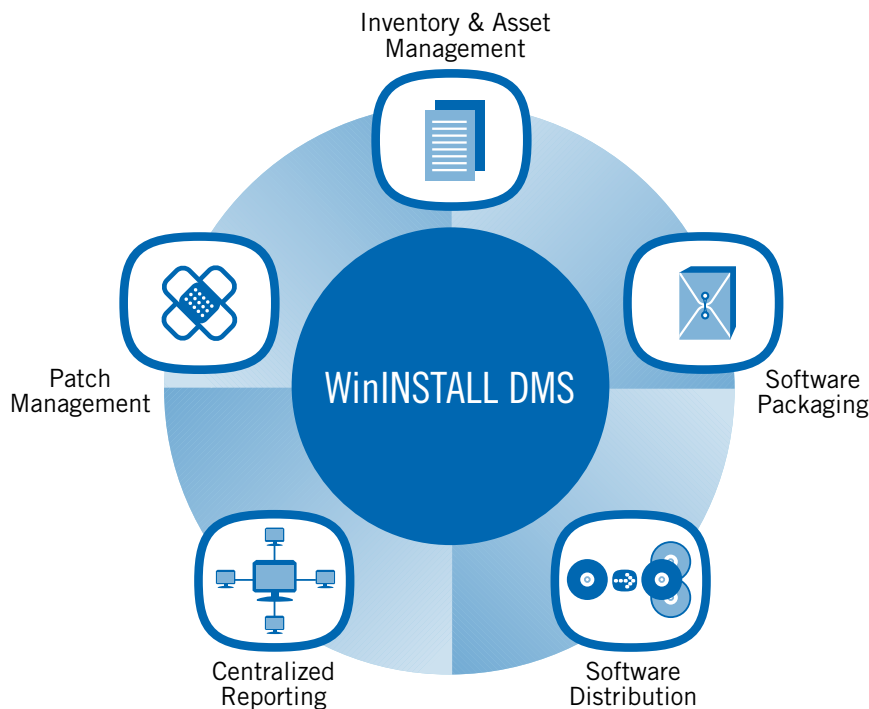
KEY BENEFITS

Completely integrated solution for:

- MSI packaging
- Flexible software distribution
- Inventory and asset management
- Automated patch management
- Centralized reporting

WinINSTALL provides a variety of options for software deployment including:

- Scheduled deployment
- Web-based deployment
- Deployment on first use
- Interactive (Pull) deployment
- e-mail or CD-based deployment
- Inventory based deployment
- Directory (LDAP, AD) based deployment
- Deployment based on operating system or language



Is it really integrated?

Over the past decade, organizations have purchased a variety of desktop management utilities, often looking to point solutions to solve specific needs. As these products have matured, the lines have become blurred and many of these ‘suite’ solutions have become homogenized.

While many vendors boast of an integrated feature set, when scrutinized, nearly every solution is comprised of components that have come via OEM or acquisition. Unfortunately, simply layering a UI on top of disparate tools doesn’t provide true integration.

True integration requires that knowledge from one task can be used to make another task more efficient or automated – WinINSTALL Desktop Management Suite provides this level of integration.

Identify and remediate conflicts

WinINSTALL’s Conflict Assessment capability allows package contents to be tested for conflicts against the applications and operating systems before package deployment. WinINSTALL compares a machine’s file inventory with package contents and conflict assessment results, to identify problems based on the actual state of the PC. In many cases, WinINSTALL not only identifies conflicts but can actually remediate them automatically.

Flexible deployment options

Many organizations would like to standardize on a single software distribution method, but rarely does it work that way. Because users reside in remote locations, have different hardware and software requirements, and have access to different network and bandwidth,

organizations need multiple options for distributing software.

When deploying software and patches to remote PCs over virtual private networks, across unreliable networks, or when you need to manage bandwidth effectively, WinINSTALL Desktop Management Suite ensures the reliable delivery of applications. Through its support for two-phase installation, check-point restart, multi-cast/unicast options, and bandwidth throttling, WinINSTALL ensures reliable delivery of applications.

Inventory and asset management

WinINSTALL has the ability to gather a full range of inventory information—including hardware, software, file information, machine tag and a history of the changes that have been made in any of these areas.

From the WinINSTALL Management Console, you can specify which machines or groups of machines should be included and when the inventory should be performed—immediately or scheduled on a daily, weekly, or monthly basis. The hardware information that can be inventoried includes network information, operating system information, and information about services, devices, drives, and machine specifications. Application information captured during an inventory includes the names, identifiers, installation dates, and installation paths of all packages installed by WinINSTALL, as well as applications installed using the Add/Remove Programs (ARP) utility. File information includes details about the file directories, file resources, file types, and application-specific file information.

Automated patch management

As the number of worms, viruses, and trojan horses continues to grow, organizations are placing greater emphasis on patch management. WinINSTALL eliminates the manual process of data

OPTIMIZED DISTRIBUTION

Two-Phase Installation

Isolates package delivery from the installation process

- **Multi-cast support**

- Distributes large packages to thousands while minimizing network traffic

- Significantly reduces software distribution time

- Optimizes network bandwidth use

- Requires no additional hardware or software infrastructure

- **Bandwidth-sensitive software management**

- Controls bandwidth use on a per package basis

- Works with multicast and checkpoint restart settings

- Eliminates bandwidth choking caused by large distributions

- Maintains service quality by limiting network congestion

- Improves reliability on a bandwidth-constrained network

- **Checkpoint restart**

- Automatically restarts interrupted package transfers where they left off

- Uses subfile-level checkpoints to restart partial files

- Supports interruptions of any length to guarantee delivery of distributed packages

gathering by automatically scanning your desktops, uncovering vulnerabilities, and providing automated options for scheduled or on-demand remediation. If you need to slipstream patch content into an OS install media prior to deployment, WinINSTALL can do that too. For remote or poorly-connected PCs, WinINSTALL uses bandwidth throttling to handle patch management.

Centralized reporting

WinINSTALL provides a comprehensive set of reports that you can use right out of the box. If you have a licensed copy of Crystal Reports, you can customize these standard reports to reflect your specific needs and environment, or you can design and create

new Crystal Reports—all from within the WinINSTALL Console.

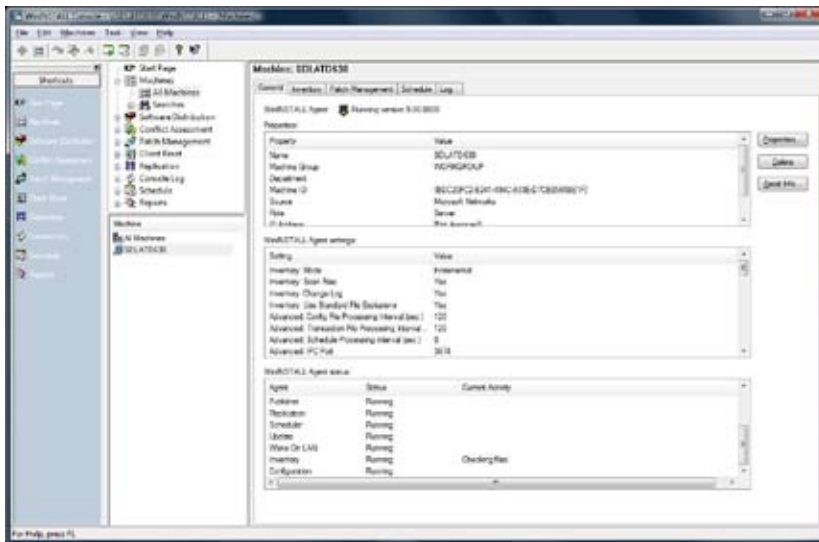
Beyond everyday PC management

Organizations looking to automate and simplify complex PC management tasks, such as zero-touch OS deployment or migration, PC refresh, and PC disaster recovery will find these additional capabilities in Attachmate's WinINSTALL Desktop Availability Suite.

The Desktop Availability Suite takes the everyday PC management tasks found in the Desktop Management Suite, and adds important functionality—such as bare-metal OS installation, DOS-free PXE support, and PC personality backup and restore.

WinINSTALL provides reports on:

- Conflict assessments: assessed packages, assessment results
- Asset management: hardware inventory, application inventory, change report, file inventory
- Package replication history
- Software Distribution
- Changes: both hardware changes and applications that have been added, removed, or had files updated
- Failures
- Users and groups
- Version updates



WinINSTALL Desktop Management Suite features easy-to-use, intuitive management capabilities.

Whatever the need, Attachmate has a desktop management solution to manage PCs and other devices—from purchase to retirement.

About Attachmate

Attachmate helps businesses extend, manage, and secure their IT investments. We offer a broad range of solutions—from terminal emulation, legacy integration, and PC lifecycle management products to innovative systems and security management tools. With our technology, more than 65,000 customers worldwide are putting their IT assets to work in new and meaningful ways. Learn more at www.attachmate.com.

WinINSTALL Solution Suites

Capability/Feature	Desktop Management Suite	Desktop Availability Suite
MSI Packaging/Conflict Assessment	✓	✓
Asset Discovery/Inventory/Change Log	✓	✓
Remote Software Distribution	✓	✓
Centralized Reporting	✓	✓
Patch Management	✓	✓
Scheduled Automation	✓	✓
Advanced Wake On LAN	✓	✓
PC personality Backup & Restore		✓
Zero-touch OS Deployment		✓
Automated PC Refresh/Restore		✓

To help determine which solution is right for your organization, this table shows the differences between the WinINSTALL Desktop Management Suite and the WinINSTALL Desktop Availability Suite.

SYSTEM REQUIREMENTS

- Database platforms**
- Microsoft SQL Desktop Engine (MSDE) version 8 and Service Pack 3 (ships with WinINSTALL)
 - Microsoft SQL Server 2000
 - Oracle 9i
- WinINSTALL server**
- Microsoft Windows XP
 - Microsoft Windows 2000
 - Microsoft Windows Server 2003
- WinINSTALL console**
- Microsoft Windows XP
 - Microsoft Windows 2000
 - Microsoft Windows 2003
- WinINSTALL agent**
- Microsoft Windows XP
 - Microsoft Windows 2000
 - Microsoft Windows Server 2003



Corporate Headquarters
 1500 Dexter Avenue North
 Seattle, Washington 98109
 TEL 206 217 7500
 800 872 2829
 FAX 206 217 7515

EMEA Headquarters
 The Netherlands
 TEL +31 71 368 1100
 FAX +31 71 368 1181

Asia Pacific Headquarters
 Australia
 TEL +61 3 9825 2300
 FAX +61 3 9825 2399

Latin America Headquarters
 Mexico
 TEL +52 55 9178 4970
 FAX +52 55 5540 4886

WEB attachmate.com
 E-MAIL info@attachmate.com

For regional office information, visit www.attachmate.com.