

# Evaluating Reflection ZFE

May 2018



**If you need terminal emulation, but managing software across your desktops is costly...take a look at Reflection ZFE! Reflection ZFE dramatically lowers the cost and effort of implementing changes across your enterprise.**

Reflection ZFE provides zero-footprint terminal emulation that delivers browser-based HTML5 access to 3270, 5250, VT, UTS and T27 host applications without the need to touch the desktop or install and manage Java runtime environments. A centralized administrative location reduces IT costs and desktop management time while efficiently providing and delivering host access to end users.

## Three reasons you need Reflection ZFE

Zero-footprint means something. It means lowering IT costs by:

1. Forgetting about desktop software management and dependencies.
2. Centralizing control of all host access to mainframe applications for both user provisioning and security requirements.
3. Gaining insight into end-user host-access using centralized metering and reporting to optimize computing resources.

## ZERO-FOOTPRINT SECURE DESKTOP MANAGEMENT

Reflection ZFE uses HTML5 to access 3270, 5250, VT, UTS and T27 host sessions. You do not need to install or manage Java on your desktops. Communication is protected using HTTPS, SSL/TLS, and SSH security.

## CONTROL USER ACCESS

You have a single web-based console and from that central location, you confirm user authentication and grant access to host sessions. A simple URL provides users with quick and secure access to their host sessions.

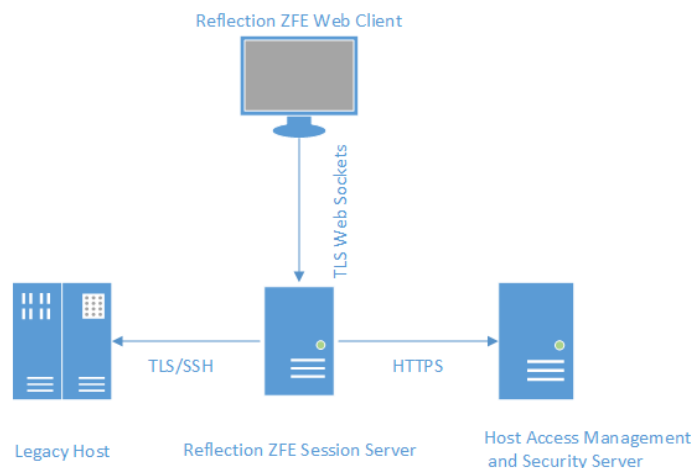
With Active Directory/LDAP integration, you leverage your existing trusted user directory.

## OPTIMIZE YOUR COMPUTING RESOURCES

Identifying those users who are accessing your host systems, and those who need access, is necessary to optimize your computing resources and to provide efficient session allocation. With Reflection ZFE you have centralized logging capabilities to monitor, report, and identify session volumes and provision user access rights.

## How does it work?

Reflection ZFE provides true zero-footprint 3270, 5250, VT, UTS/T27, SSH terminal emulation in a web browser. This means there is no Java runtime required and no software deployed to your desktops.



It is a simple solution. Reflection ZFE drives down IT costs. You have eliminated the need to touch the desktop.

## REFLECTION ZFE COMPONENTS

- ◆ Host Access Management and Security Server  
The Host Access Management and Security Server (MSS) provides an Administrative Console, a web-based centralized location where you can add, edit, and delete terminal sessions. MSS is part of the broader Micro Focus story and is compatible with other Micro Focus products.
- ◆ Session Server

The session server is an NT service or UNIX daemon that provides the engine that runs host sessions. Multiple session servers can serve up tens of thousands of sessions and provide efficient and rapid access to your host data.

- ◆ Web Client

The web client is the web-based terminal emulator where your users can easily access authorized sessions from any platform and from any location.

The Web client provides macros, keyboard and color mapping, on-screen keyboard, copy/paste functionality, host-initiated screen updates, and IND\$File and FTP file transfer capabilities.

## BROWSER AND OPERATING SYSTEM SUPPORT

Reflection ZFE is a 64-bit product and supports Google Chrome, Mozilla Firefox, and Microsoft Internet Explorer and Edge browsers, as well as these minimum supported platforms:

- ◆ Windows 2008 Server
- ◆ Red Hat Enterprise Linux 6.x
- ◆ SUSE Enterprise Linux 11.x
- ◆ AIX 6.x
- ◆ zLinux (SUSE E11.x and RHEL6.x)

## SECURITY CONSIDERATIONS

When you open up your legacy hosts to users outside the corporate firewall - business partners, remote users, mobile sales personnel, and others - you need to shield your information from known security threats. With Reflection ZFE, you can provide secure web-to-host access to all your users, whether they're around the corner or around the world. Reflection ZFE, along with the MSS, provides HTTPS connections and a variety of authorization and authentication options.

Reflection ZFE supports the TLS and SSH protocols to protect mission-critical data. To secure your passwords and other sensitive data, use the HTTPS protocol, which provides TLS encryption. Supported cipher suites include AES128, 168-bit Triple DES, and other strong ciphers, ensuring confidentiality and integrity of data over the Internet and other insecure networks.

Reflection ZFE can be connected securely to the browser, the host, and the management server.

## Installing Reflection ZFE

If you don't have our software yet, go to <https://www.microfocus.com/products/reflection/zfe/trial/> and fill out an evaluation request form. You'll be sent an e-mail message with instructions to download and install Reflection ZFE.

If you have questions about using the download site, see [Using the Micro Focus Downloads Web Site \(FAQ\)](#).

The installation wizard walks you through the installation process.

## GETTING STARTED

After successfully installing Reflection ZFE, make sure that you are pointing to the Management and Security Server you want to use. MSS uses an activation file to provide product-specific functionality.

After installing, you should have the proper activation file in place. However, you can import an activation file from the Micro Focus download location or use an existing Host Access Management Server that has already been installed. Activation file names use this format:

```
activation.<module_name>.jaw
```

## Configuring Reflection ZFE as an administrator

You can supply an end user with a browser-based terminal emulation session following these steps:

1. Open the MSS Administrative Console.
2. Add a new session.
3. Configure settings.
4. Assign a user to a session.

## OPEN THE ADMINISTRATIVE CONSOLE

From the MSS or Reflection ZFE Start menu, open the Administrative Server.

Log on as administrator, using the password you specified during installation.

## CREATE A NEW SESSION

Click **Add** to create a new session in the Administrative Console Manage Sessions panel.

# Manage Sessions - Add New Session

## Configure Session

Product  
Reflection ZFE

Session name \*

ZFE Session Server Address \*  
https://zfe-ci.attachmate.com:7443/zfe

If it isn't already selected, choose Reflection ZFE as the session type, enter a session name, and click Launch to start configuring the Reflection ZFE session for the server listed at the ZFE server address.

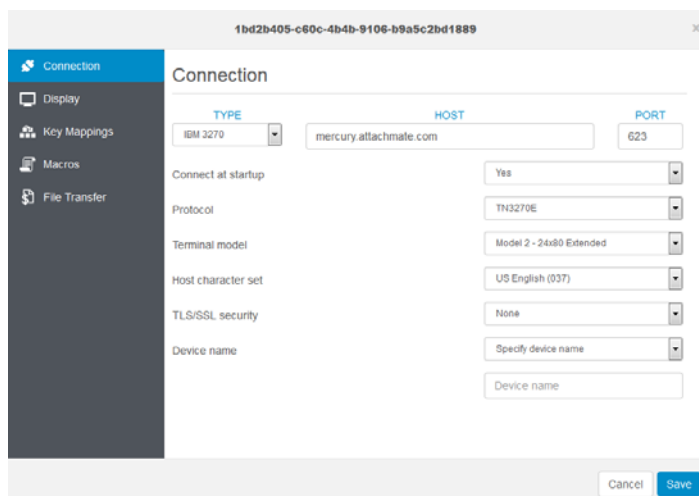
**TIP:** You can create a direct link to a specific Reflection ZFE session using the following format:

```
<zfe-session-server:port>/zfe/?name=<session-name>
```

Users can use this link to directly launch a Reflection ZFE web session.

## CONFIGURE SETTINGS AND MAP KEYS

The Reflection ZFE web client Connection panel is where you configure host settings, map keys and colors, enable hotspots, macro, and file transfer capabilities, as well as provide connection information.



Connection settings vary depending on the host type.

## ASSIGN USERS TO SESSIONS

Using the URL you provide, each user will have access to only the sessions you assign to him. One user can be assigned to multiple sessions.

Authentication and authorization is used to validate the identity of a user and the method you want to use to map sessions to individual users or groups of users.

You have a list of created and configured sessions, assigned to specific users, and available to them using the URL you provided. The Reflection ZFE web client interface is simple and easy for your users to navigate.

## Navigating the web client

How will your users interact with the web client?

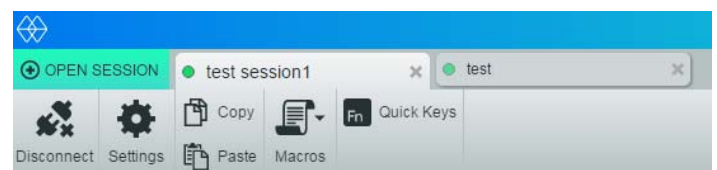
It really is as simple as clicking a link. The connection URL to the Reflection ZFE web client usually looks something like this:

```
https://myserver.mycompany.com:port/zfe
```

As an administrator you can share the primary Reflection ZFE login URL with your users. This address opens the web client and provides access to the Reflection ZFE sessions assigned to them. Users may have to login if configured as such.

## THE TOOLBAR AND SESSION TABS

Disconnecting, closing and opening new sessions, and other functions, such as recording macros, are available from the toolbar.



Users can switch between open sessions using the session tabs and interact with the terminal emulator via an on-screen keyboard available from the Quick Keys icon. The Macro icon provides access to all macros associated with the session by the administrator. Depending on user preferences set by the administrator, users can modify display settings, record macros, map colors, and access file transfer capabilities.

## Simplify Migration and Support

Micro Focus has been developing IT solutions that support emerging technologies for nearly 30 years. As your business continues to evolve, Micro Focus is committed to building solutions that maximize your IT investments and allow your IT organization to be as flexible as possible.

## REFLECTION ZFE IS THE ANSWER

Migrating, patching, updates, and desktop configurations can be time consuming and costly. Reflection ZFE and the whole suite of Reflection products can provide a single solution. You can successfully standardize on Micro Focus and Reflection ZFE.

## FOR MORE INFORMATION ON REFLECTION ZFE

*For more information about Reflection ZFE, review the product Help. For further assistance regarding evaluation software and product updates, visit our [Technical Support site](#).*